

# Material Comparison

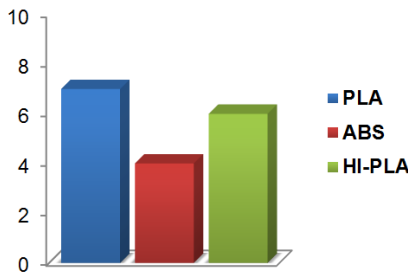
PLA, ABS, HI-PLA

## Description

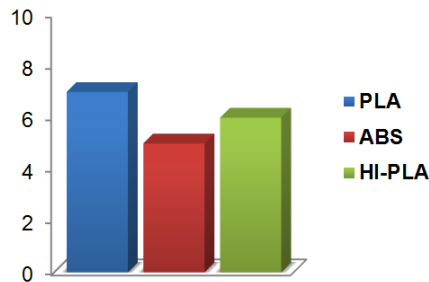
This datasheet provides information on properties of 3D printed parts made from our filaments. Unlike other manufactures of filaments we test all of our materials with 3D printed specimens created with our own FDM 3D printer with filaments produced directly from our production line and thus give direct information on properties of your 3D printed product.

## Relative properties

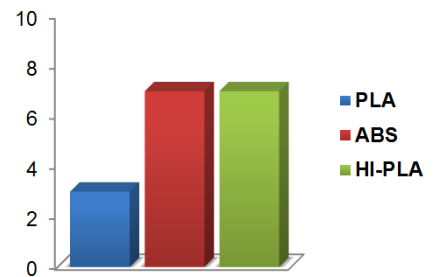
Stiffness



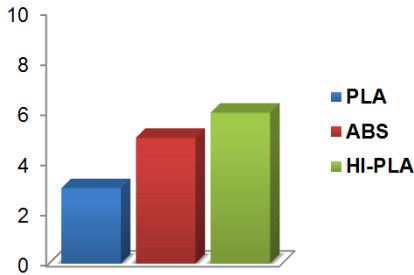
Strength



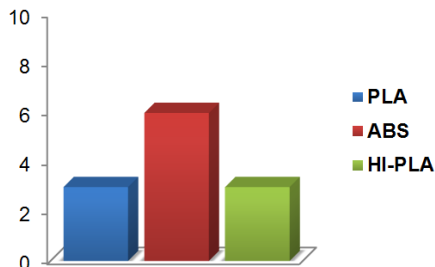
Impact toughness



Elongation



Temperature resistance



Printing recommendations

Material	Nozzle temperature	Heated bed temperature
PLA	200-230 °C	Not required (50-60 °C)
ABS	230-260 °C	Required (90-110 °C)
HI-PLA	200-230 °C	Not required (50-60 °C)

## Testing

All of our test were done in state of the art laboratory for polymer characterization in Polymer technology collage Slovenj Gradec in Slovenia.

